

# Laboratory glassware washer

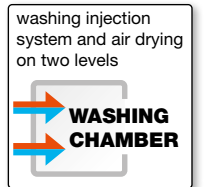


## > LAB 500 CL

> LAB 500 CL is specially designed for laboratories with limited space.

**A powerful filtering air drying system is a feature of this under bench laboratory glassware washer.**

Washing and air drying on 2 levels, normally seen on large machines, has been incorporated into this small model.

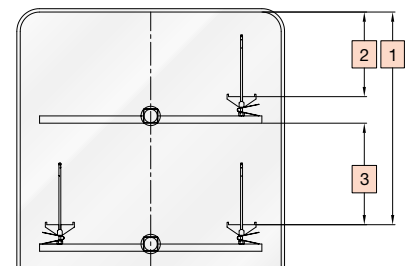


- > Chamber volume 171 lt
- > Basket volume 151 lt

- > Option
  - Stand
  - Boiler to pre-heat DI water
  - Glass door



- Two levels wide detergent compartment to store up to four 5 lt. chemical containers.



- 1 440 mm
- 2 170 mm
- 3 210 mm

## > Key features

- Forced air drying system with adjustable time and temperature setting, helps to ensure completely dry, inside and outside, of all the glassware.
- RS 232 port is provided with printer connection for monitoring and validating washing phases.
- LCD display and availability of 40 programs for laboratory glassware.
- Telescopic bearing rails enable easy and safe loading/unloading of the glassware.
- Washing and DI disinfection temperature are fully adjustable up to 93°C. Temperature is monitored by two independent sensors.
- Standard steam condenser helps to eliminate vapors from entering into the laboratory.

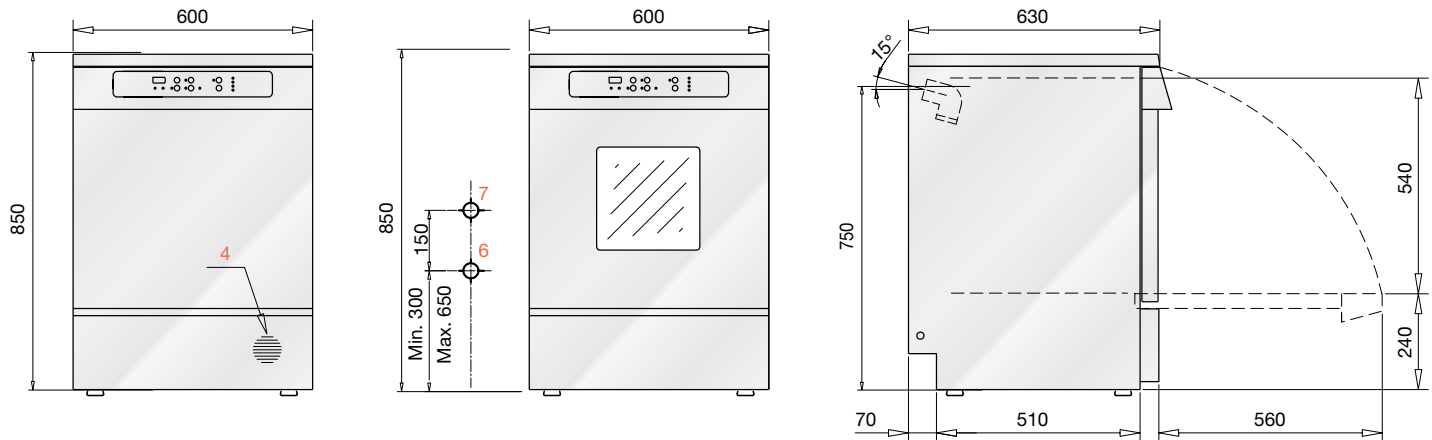
- Heavy washing pump ensures high flow rate combined with effective spray pressure.
- **Washing injection system and drying on two levels.**
- Inner cabinet, washing arms and tank filters made of high quality AISI 316 L stainless steel.
- Triple water filtering system captures residue preventing re-circulation and extending the pump life.
- Two automatic liquid dispensers are standard. One more dispensers is available.
- Steelco LAB 500 CL accepts a variety of interchangeable standard and injection baskets used even in LAB 500.

## > Connections

Electrical connection	400 Vac 3 N+T / 50Hz
Power	5600 W
Pump power	550 W
Noise	56 dB(A)
Permitted room temperature	+5°C / +40°C
Dryer blower	150 m <sup>3</sup> /h
Dryer heating	2000 W

## > Optional

- Extra power 8 KW
- 3<sup>rd</sup> Chemical dosing pump
- HEPA H14 air filter
- External printer ST1



1	Warm water connection	¾" male	DN 20 mm
2	Cold water connection	¾" male	DN 20 mm
3	Deminerlized water connection	¾" male	DN 20 mm
4	Breather pipe chamber	Ø 50 mm	
5	Electrical connection		
6	Machine drain	Ø 25 mm	
7	Steam condenser	Ø 25 mm	

# Accessories

## > Inserts



### C61

- > insert with 28 spring hooks for laboratory glassware

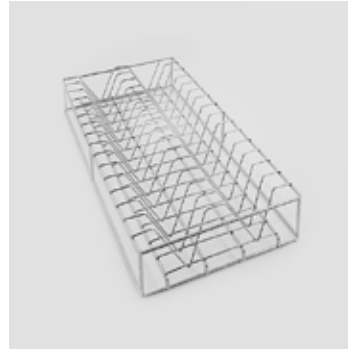


### C63

- > net basket mm.120x120x120

### C64

- > cover for C64



### C97

- > 30 positions insert for Petri dishes



### C70

- > net basket 1/4 mm. 200 h

### C68

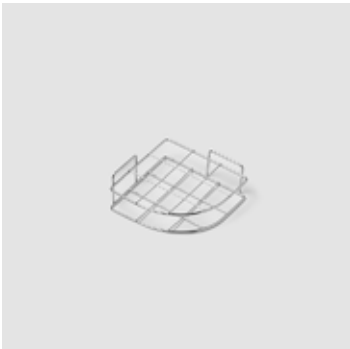
- > net basket 1/4 mm. 100 h

### C69

- > net basket 1/4 mm. 130 h

### C77

- > cover for C68/69/7



### C86

- > net separator for 1/4 net basket

## Detergent cabinet

- Two levels wide detergent compartment to store up to four 5 lt. chemical containers.



## Water purification system

DI water rinsing helps to ensure the removal of detergent residues and grants effective cleaning results.

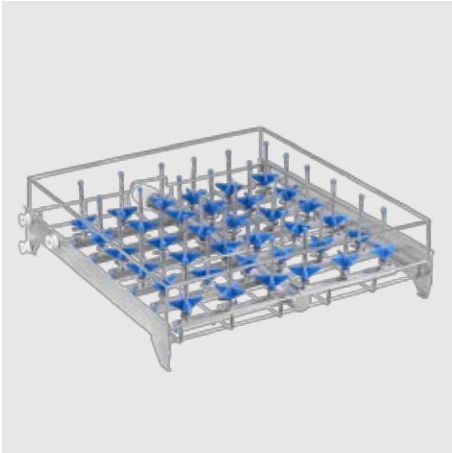
- Stainless steel water purificator container mm 300 x 630 x 840 h
- Provided with 10 lt resin plastic cartridge - mm 500 h - ø mm 210
- Equipped with priming and pressure relief valve and conductivity system pressure proof up to 10 bar



# Accessories

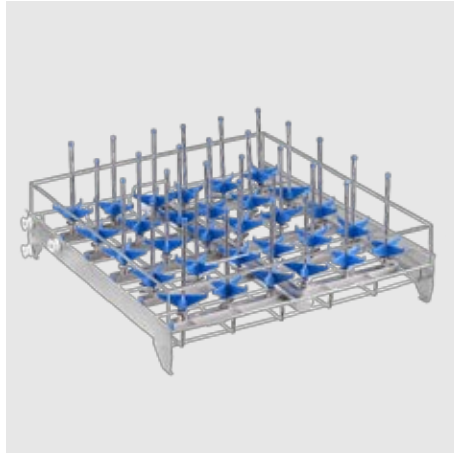
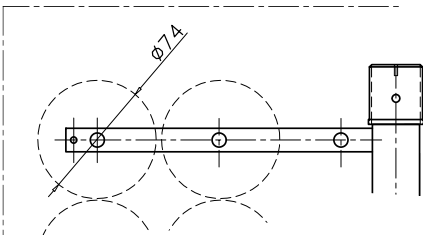
## > Baskets

for models LAB 500, 500 C only



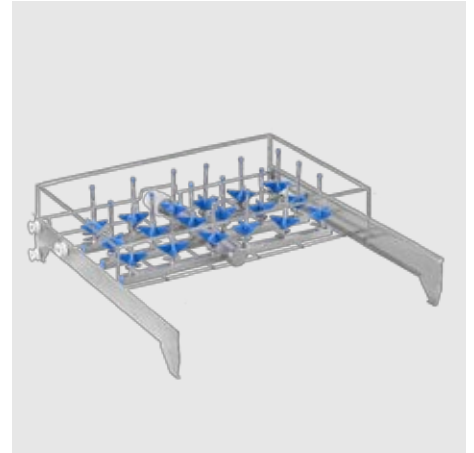
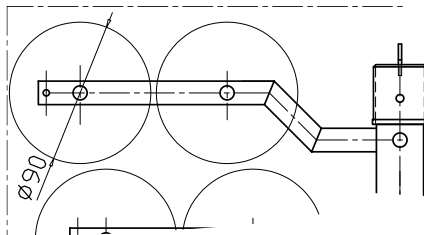
### C711

> upper basket  
36 jets mm. 80/110 h -  $\varnothing$  mm. 6



### C712

> upper basket  
25 jets mm. 140/170H -  $\varnothing$  mm. 6

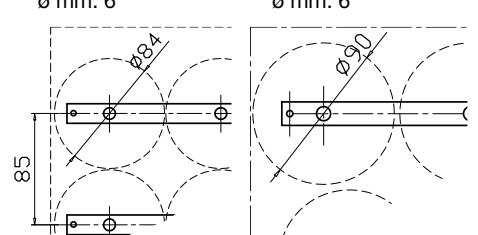


### C713

> upper basket 18 jets  
mm. 80/110 h  
 $\varnothing$  mm. 6

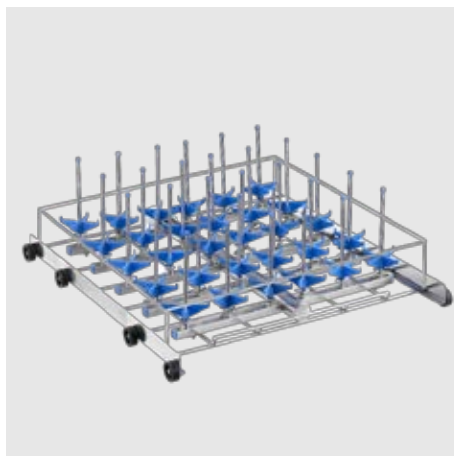
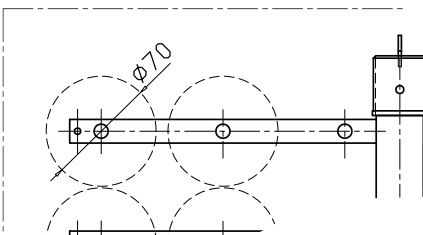
### C714

> upper basket 10 jets  
mm. 140/170 h  
 $\varnothing$  mm. 6



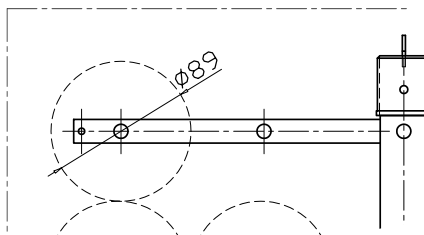
### C715

> lower basket  
36 jets mm. 80/110 h -  $\varnothing$  mm. 6



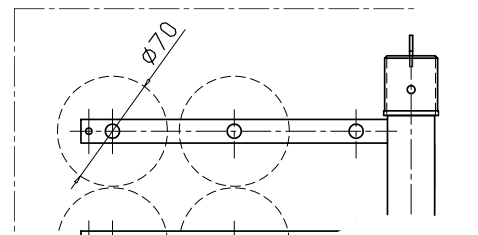
### C716

> lower basket  
25 jets mm. 140/170H -  $\varnothing$  mm. 6



### C717

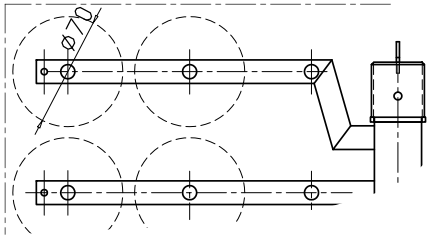
> lower basket  
12 jets mm. 80/110 h -  $\varnothing$  mm. 6





**C723**

> upper mixed basket for centrifuge tubes, vials, test tubes with 121 positions + 18 injectors mm. 80/110 h - ø mm. 6



**C721**

> upper basket with washing arm



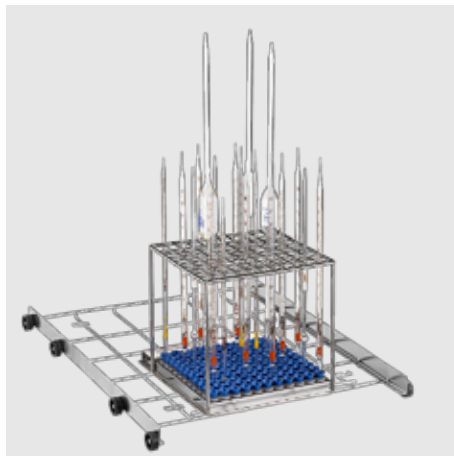
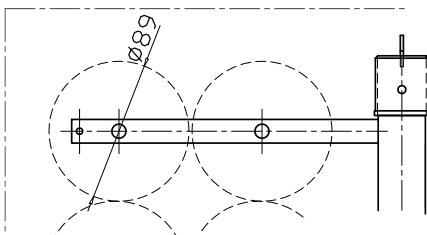
**C720**

> lower basket with 2 pipettes cassettes max length 300mm



**C718**

> lower basket  
10 jets mm. 140/170 h - ø mm. 6



**C719**

> lower vertical pipettes basket 120 positions



**C52**

> lower basket