

HICLAVE

HVseries

*Four new autoclaves equipped with many functions!
More safety and more user-friendly features*



Ten important features

1. Electromechanical lock system (patent pending).

By only using a one-touch lever, you can easily and safely open the lid chamber.

2. Dual-sensing interlock mechanism.

Safety system locks the lid by detecting the inner pressure and the temperature of the chamber. This dual-sensing system assures greater safety.

3. Double-sensing system for air exhaust.

Residual air which affects sterilization in chamber is detected with the dual sensor method.

4. Auto-exhaust mechanism.

An auto steam-exhaust mechanism is newly adopted for sterilization of liquids without boil over. Steam is slowly released at a preset percentage rate after sterilization is completed.

5. Process mode for agar.

For rapidly melting agar and maintaining it at liquid temp., or for a hot and faster start-up.

6. Programmable auto start.

Built-in timer allows you to program a time to automatically start a cycle.

7. Memory back up.

You can change the parameters for sterilization/exhaust/warming in each mode. Once changed, they are retained, even in case of power failure.

8. Space-saving design.

The chamber lid opens vertically upwards. This design saves space compared to models in which the lid swings out horizontally.

9. Various optional accessories.

Add-on accessories (see back page) can be purchased and easily installed in the field.

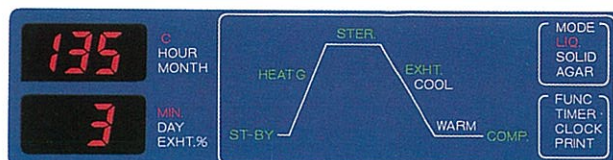
10. Process status display.

The current status of the sterilization process is indicated by means of a set of flashing lights.



Products shown in this brochure are manufactured by the company, ISO 9001 certified

[Display]



[HV-50]

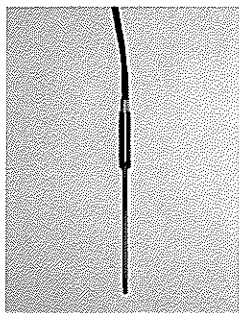
HICLAVE HV series

○Main specifications

Model No.	HV-25	HV-50	HV-85	HV-110
Product name	"HICLAVE" Autoclave			
Dimensions (W×H×Dmm) (Height with lid open)	480×950×460 (1220)	540×1040×530 (1370)	660×1000×650 (1440)	660×1180×650 (1610)
Chamber size(mm) (Capacity)	240φ×550D (25ℓ)	300φ×710D (50ℓ)	420φ×615D (85ℓ)	420φ×795D (110ℓ)
Power source	AC110/120/220/230/240V, 50/60Hz (specify voltage when ordering)		AC220/230/240V, 50/60Hz (specify voltage when ordering)	
Power consumption	1.5KW	2.0KW	3.0KW	4.0KW
Net weight (approx.)	41kg	57kg	71kg	81kg
Sterilization temperature range	105 to 126℃	105 to 135℃		
Maximum allowable pressure (Gauge pressure)	0.14 Mpa	0.26 Mpa		
Temperature display range	5 to 128℃	5 to 137℃		
Warming temperature range	45 to 60℃			
Agar dissolution temperature range	60 to 100℃			
Chamber material	SUS304 (Stainless steel)			
Sterilization timer	1 to 250 minutes			
Auto start timer	1 minutes to 7 days			
Pressure gauge	0 to 0.4 Mpa			
Selective mode	Sterilization of agar (with Warming)	Preparation ⇨ Heating ⇨ Sterilization ⇨ Exhaust(Slow/adjustable) ⇨ Warming ⇨ Completion		
	Sterilization of liquids:	Preparation ⇨ Heating ⇨ Sterilization ⇨ Exhaust(Slow/adjustable) ⇨ Completion		
	Sterilization of solids/ medical instruments	Preparation ⇨ Heating ⇨ Sterilization ⇨ Exhaust(Fast) ⇨ Completion		
	Agar dissolution	Preparation ⇨ Heating ⇨ Warming ⇨ Completion		
Safety devices/ Warning alarms	*Double sensing inter lock mechanism *Over-pressure power cut-off *Over-temperature power cut-off *Sterilizing time counting timer Electric leakage breaker and over current detector *Temperature sensor wire breakage detector *Securely closed lid check function *Exhaust bottle ready-to-use check system *Lack-of-water prevention device Pressure safety valve *Heater malfunction checker (Note: The * marked functions show ERROR indication on the display when it works)			
Standard accessories	Stainless steel wire baskets, Heater cover, Drain hose, Exhaust bottle, Caster stoppers.			
Optional accessories	Stainless steel wire baskets, Stainless steel buckets, Hook for basket/bucket(for HV-110 only).			

* Specifications subject to change without notice due to continuous improvement.

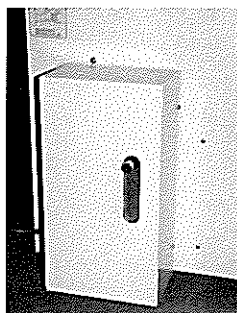
○Retrofittable accessories (Any combination possible)



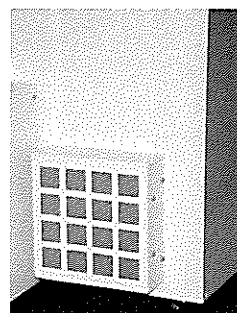
F: Floating sensor



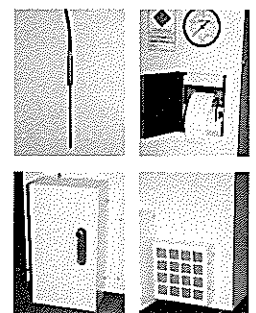
P: Digital printer



W: Automatic water supply



A: Cooling unit



Z: All combined
(F+P+W+A)



Manufacturer
HIRAYAMA Manufacturing Corp.

2-6-5 TOYONO-CHO, KASUKABE-SHI,
 SAITAMA 344-0014, JAPAN
 TEL:+81-48-735-1242 FAX:+81-48-733-2384

Dealer